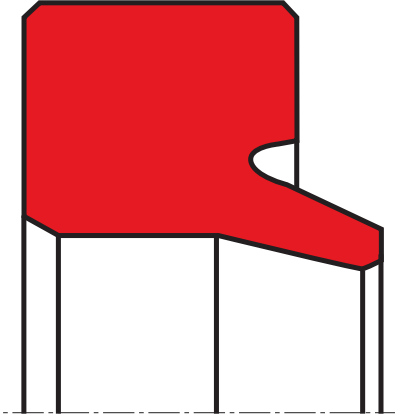


## wiper A05-I

## seal spec



### **description**

as profile A05-A, but without back support area. special housing design according ISO 6195-Type C.

- the seal profile and close machining tolerance provide a good static seal for the outside diameter, assisting in the prevention of ingress of humidity and foreign matter via the outside diameter.
- the design of the wiping lip, with its extremely rounded outline, helps to maintain the initial lubricating film; any dirt is wiped off reliably.
- the provision of a support shoulder, along with relief grooves on the mating seal face, prevents tilting of the wiper and pressure build up on the trailing side, which is to be avoided.
- support shoulder not included in design A05-I.

### **application**



*not bolded symbols; please consult our technical for application limitations*

### **category of profile**

machined only.

### **single acting**

### **area of application: hydraulics**

- reciprocating rods on pneumatic cylinders.
- push rods and valve stems.
- (materials must be selected according to operating requirements).
- use the A05-I design for mounting space according to ISO 6195-1986 type C.

### **function**

A05-A and A05-I pneumatic wipers are designed to keep dust, dirt, sand and metal chips away from the sealing and guiding elements, thereby avoiding abrasive damage caused by external contamination.

**operating parameters & material**

diameter range: up to 600 mm

material	temperature	max. surface speed	hydrolysis	dry running	wear resistance
s-mart PU	-30 °C ... +110 °C	4 m/s	-	+	++
s-mart HPU	-20 °C ... +110 °C	4 m/s	++	+	++
s-mart LTPU	-50 °C ... +110 °C	4 m/s	-	+	++
s-mart SPU	-20 °C ... +110 °C	5 m/s	++	++	++
s-mart GPU	-30 °C ... +110 °C	4 m/s	++	+	++
s-mart NBR	-30 °C ... +100 °C	4 m/s	-	-	O
s-mart FKM	-20 °C ... +200 °C	4 m/s	-	-	O
s-mart EPDM <sup>2</sup>	-50 °C ... +150 °C	4 m/s	++	-	O
s-mart HNBR	-25 °C ... +150 °C	4 m/s	+	O	+
s-mart XPU	-30 °C ... +110 °C	4 m/s			
s-mart XHPU	-20 °C ... +110 °C	4 m/s			
s-mart XSPU	-20 °C ... +110 °C	5 m/s			

the stated operation conditions represent general indications. it is recommended not to use all maximum values simultaneously.  
surface speed limits apply only to the presence of adequate lubrication film.

<sup>2</sup> attention: not suitable for mineral oils!

++ ... particularly suitable

o ... conditional suitable

+ ... suitable

- ... not suitable

for detailed information regarding chemical resistance please refer to our "list of resistance". for increased chemical and thermal resistance rubber materials are to be preferred, polyurethan materials increase wear resistance.

**surface quality**

surface roughness	Rtmax (µm)	Ra (µm)
sliding surface	according to seal data	
bottom of groove	≤6,3	≤1,6
groove face	≤15	≤3

**tolerance recommendation**

seal housing tolerances		cs	R [mm]
L < 10 mm	0,2	≤ 5	max. 0,3
L ≥ 10 mm	0,3	>5.....≤ 7,5	max. 0,4
D1	H11	>7,5.....≤ 10	max. 0,6
D	H11	> 10	max. 0,8

**ISO- wiper housing for A05-I:**

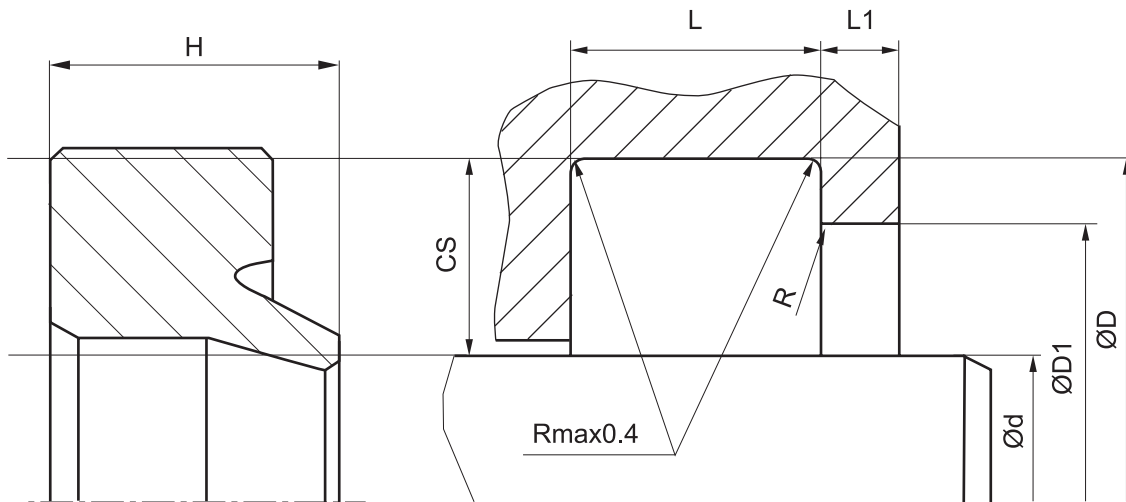
d	NB	L	D1	L1min
12..... ≤ 28	3	4	d+2,5	2
> 28..... ≤ 56	4	5	d+3	
> 56..... ≤ 110	5	6	d+3	
> 110... ≤ 140	7,5	8,5	d+4	

**mode of installation**

the prerequisites for perfect functioning are careful fitting and an accurately dimensioned mounting space. in general, wipers snap easily into their housings when distorted into a kidney shape (over 20mm diameter).

**seal & housing recommendations**

*please note that we are able to produce those profiles to your specific need or any non standard housing. for detail measurements, please see seal-mart catalog...*



*don't hesitate to contact our technical department for further information or for special requirements (temperature, speed etc.), so that suitable materials and/or designs can be recommended.*